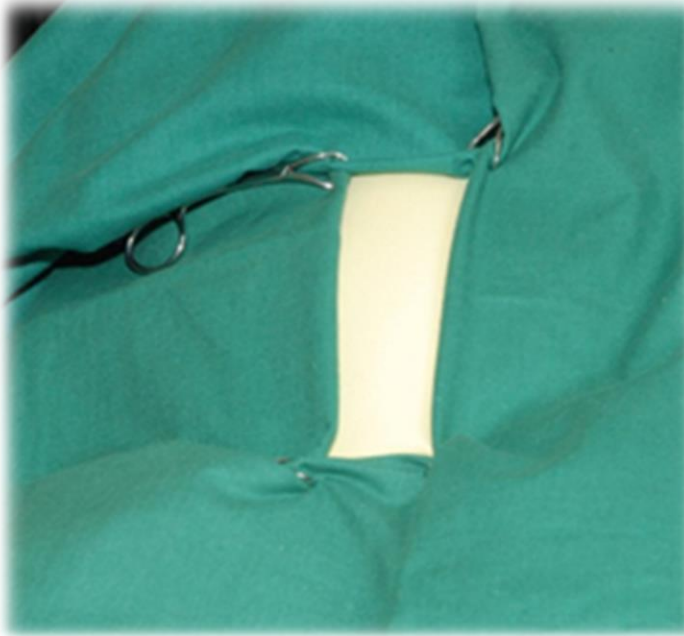


Four Corner Draping



Disclaimer

A series of booklets has been developed by the Clinical Skills Lab team (staff, recent graduates and students) from the School of Veterinary Sciences, University of Bristol, UK.

Please note:

- Each booklet illustrates one way to perform a skill and it is acknowledged that there are often other approaches. Before using the booklets students should check with their university or college whether the approach illustrated is acceptable in their context or whether an alternative method should be used.
- The booklets are made available in good faith and may be subject to changes.
- In using these booklets you must adopt safe working procedures and take your own risk assessments, checked by your university, college etc. The University of Bristol will not be liable for any loss or damage resulting from failure to adhere to such practices.

This work is under the Creative Commons Attribution-NonCommercial-NoDerivatives 4.0 International License.



© The University of Bristol, 2017



University of
BRISTOL

Year Group: BVSc3 +



University of
BRISTOL

Equipment list: Four corner draping

Equipment for this station:

- Dog model
- Patient cradle (dog in dorsal recumbency)
- Four drapes
- Four towel clips

Considerations for this station:

- Be careful of your fingers when applying the towel clips

Anyone working in the Clinical Skills Lab must read the 'CSL_I01 Induction' and agree to abide by the 'CSL_I00 House Rules' & 'CSL_I02 Lab Area Rules'

Please inform a member of staff if equipment is damaged or about to run out.



University of
BRISTOL

Clinical Skills:

Four Corner Draping



1
Grasp two corners of the drape letting it fall in front of you. Do not let it touch your body (unless you are wearing a sterile gown when this is ok) or anything else.



2
Fold the top of the drape over onto the side away from your body. This creates a neat edge.



3
With your thumbs on the side of the drape closest to your body, wrap the drape around each hand. This protects your hands from accidentally touching a non-sterile part of the patient.



4
Always drape the side of the patient closest to your body first as this will protect the gown from the non-sterile table.



5
The drape should be moved ('floated') over the patient's body and the folded edge placed a suitable distance from the intended line of incision. Don't drag the drape over the non-sterile areas of the patient's body. Only minimally adjust the drape once it has been placed onto the patient. If the drape needs to be adjusted it should only be moved in a direction AWAY from the sterile surgical area and NEVER towards the sterile area.





University of
BRISTOL

Clinical Skills:

Four Corner Draping

7



Repeat the process (Steps 1–6) with the second drape – place it at right angles (90 degrees) to the first drape.

8



Secure the drapes to the patient using a towel clip, this should be placed at the intersection of the two drapes. In a live patient remember that this is the first painful stimulus so it is wise to inform the anaesthetist that you are about to do attach the clip.

9



Tuck the towel clip under the upper drape. This will keep it out of the way (and prevent suture material being caught around a clip).

10



11



Repeat the process with the third drape – place it at right angles to the first drape, at the opposite end of the sterile area to the second drape.

12



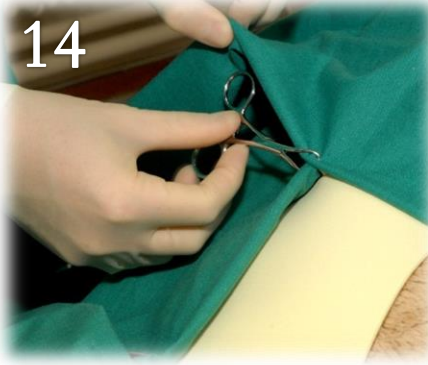
Secure the drapes to the patient using a towel clip (this prevents the drapes moving or becoming dislodged).



University of
BRISTOL

Clinical Skills:

Four Corner Draping



When placing the final drape either walk round to the other side of the table and place the drape or sweep the drape over to the far side (as shown above). Be careful not to contaminate the drape by touching a fitting, member of the team etc.

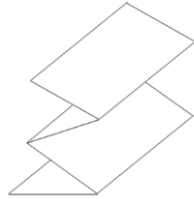
On completion of draping, there will be an appropriately sized surgical site surrounded by sterile drapes secured by towel clips (which have all been neatly tucked away).



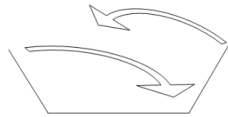
University of
BRISTOL

Resetting the Four Corner Draping Station

1. Unclip all the drapes
2. Fold each drape:
 - a) Concertina the drape



- b) Then fold the ends in so the drape is in thirds



3. Clip all 4 towel clips together
4. Place towels in a pile with towel clips on top

Station ready for the next person:



Please inform a member of staff if equipment is damaged or about to run out.



University of
BRISTOL

I wish I'd known:

Four Corner Draping

- Remember the sequence for placing the drapes: start at the near side (closest to your body), then place the drapes at either end and then at the far side.
- If a drape needs adjustment, only move away from sterile area, not towards or over it.
- When placing the clip grasp sufficient, but not an excessive amount, of skin – be mindful of the patient.